

# **Sod Cutter**

## **Operator's Guide**

**1. *Cutting Tips-*** It is usually not necessary to water soil before cutting, unless soil is very compacted. To test soil: push a garden spade or large screw driver into the ground. The tool should drive in 2-3 inches with little effort. If unable to do so, watering the lawn a day before is necessary. Allow the grass to dry before cutting. Also keep in mind that soil conditions may vary in different sections of your yard. You may need to test different areas, or adjust the cutting depth lever as you move along to compensate for the varying conditions.

**2. *Before You Start-*** Make sure the work area and blade are clear of objects such as wire, nails & rocks. Keep everyone, including children & pets, out of the work area. Debris can be thrown out of the machine and cause injury. Put the sod cutter in neutral and the blade in transport position before starting.

**3. *Starting the Machine-*** Open the fuel valve. Place the lever all the way to the right. Turn off the valve when not in use to avoid flooding the carburetor. When starting the engine cold or partially warm, place the choke control lever completely or partially to the left. Move the lever back to the right once the engine starts. When starting the engine warm, the choke control lever should be in the right position. Find the position where the engine runs smoothly. Turn the engine switch to the ON position. Pull out the starter handle slowly until the gears mesh. Then give a sharp pull on the starter handle. **DO NOT** pull out the starter cord completely and **DO NOT** let go of the starter handle while extended. Allow the starter cord to return while holding the handle. Once the engine has started, increase the engine speed with the throttle handle on the handle bar.

**4. *Operating-*** Position the sod cutter at your starting point with the blade out of the ground. Unscrew knob and thread into a desired hole for the correct depth of cut. Pull the blade engagement lever up. Place the shift lever in slow gear (setting #1). Pull the throttle while maintaining a slight down pressure on the handlebar and cut a short distance, then stop. Put shift lever in neutral. Lift the edge of the sod to check depth. If depth needs to be adjusted, unscrew knob again, as above, and thread into a new depth level. End cuts by pushing the blade engagement lever down while holding the throttle to cut the end of the sod strip as the blade exits the ground.

**5. Shutdown-** If the engine has been running at full speed, let it run at low speed for about 30-60 seconds. Turn off. Close the fuel valve lever by turning all the way to the left. Push the blade engagement lever down to raise the blade.

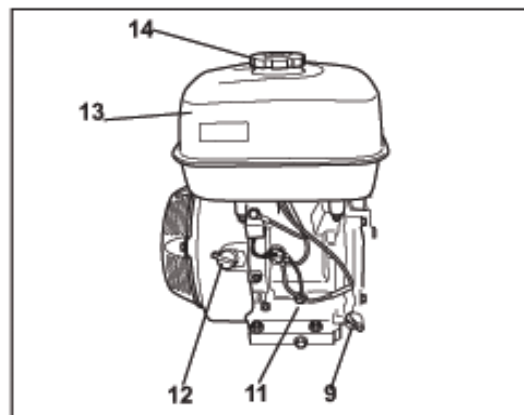
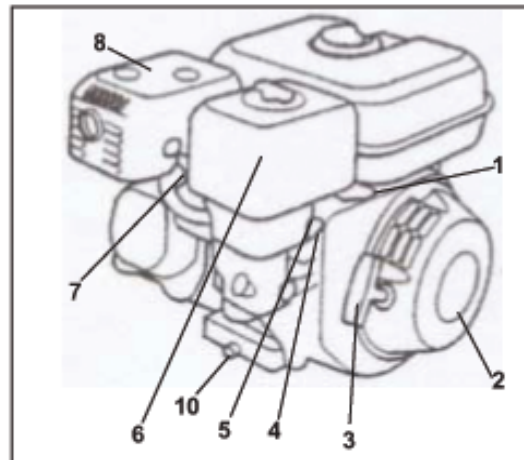
**6. Refueling-** Use a minimum 86 octane unleaded fuel. Never use a gasoline mixed with a two-cycle oil. Do not fill the tank completely. Allow space for the fuel to expand as it warms up.

**7. Maneuvering-** Stop before shifting gears. Cut going down slopes **NOT** across or up slopes (**DO NOT** operate on hills exceeding a 25% grade). Do not attempt sharp turns while cutting. To engage reverse gear you may need to rock the machine back and forth while pulling the shift lever.

### Engine

Exterior engine components and controls.

1. Throttle
2. Starter
3. Starter handle
4. Fuel valve
5. Choke control
6. Air filter
7. Spark plug
8. Muffler
9. Oil dipstick
10. Oil drainage
11. Oil level guard
12. Engine switch
13. Fuel tank
14. Fuel filler cap



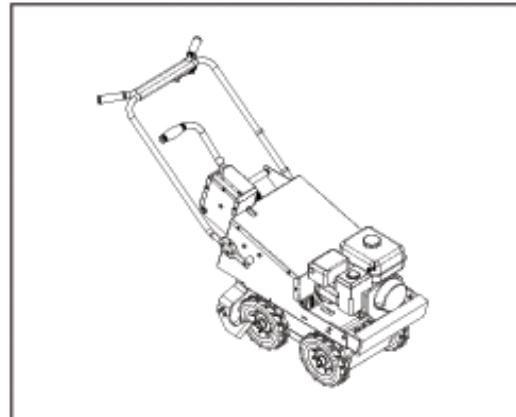
---

## CONTROLS

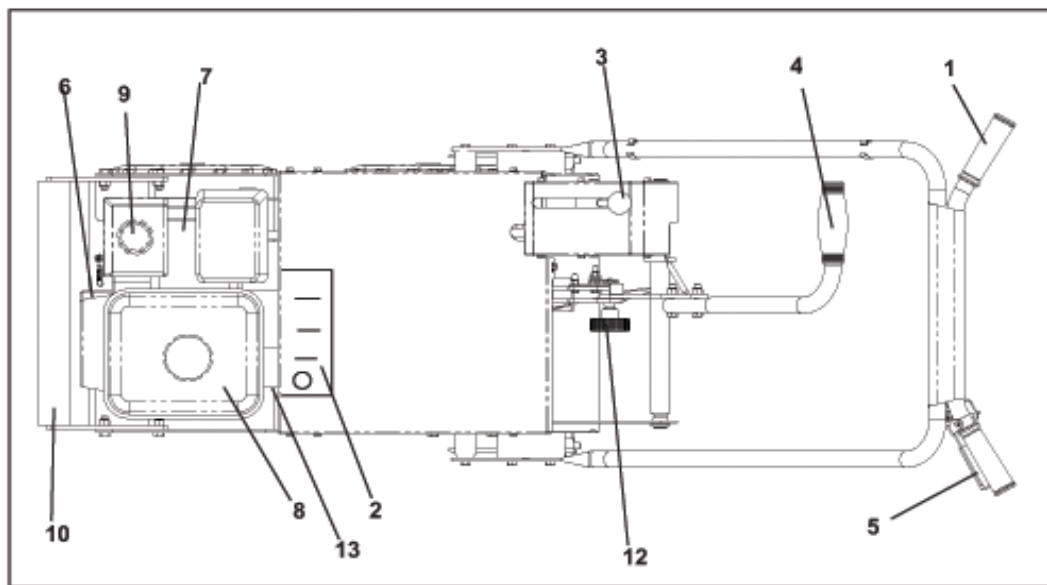
---

### Presentation

The machine is equipped with a 5.5 hp Honda four-cycle engine. This unit is powered by 4-wheel drive.



### Main components and operating controls



- |                           |                              |
|---------------------------|------------------------------|
| 1. Handle                 | 7. Engine                    |
| 2. Centrifugal Clutch     | 8. Fuel Tank                 |
| 3. Shift Control Lever    | 9. Air Filter                |
| 4. Blade Engagement Lever | 10. Weight                   |
| 5. Throttle               | 11. Engine switch            |
| 6. Engine Start Cord      | 12. Knob to set depth of cut |
|                           | 13. Oil Reservoir            |